



PROFESSIONAL

DRONE

IMAGERY PTY LTD



CAPABILITY
STATEMENT

Propelling

YOUR BUSINESS

Success...



with...



Advanced
AERIAL IMAGING
Intelligence



Our
COMPANY





LICENCED & CERTIFIED
SPECIALISED COMMERCIAL
DRONE SERVICES



WHO WE ARE

Professional Drone Imagery Pty Ltd is a commercial-grade **Drone Remote Operator** providing specialised imaging services based in Corrimal, NSW, Australia. Co-founded by Heather and Daniel James, our company leverages over 20+ years of combined expertise in thermal, mapping and surveying, photography and videography, marketing and advertising, as well as construction knowledge and experience to deliver exceptional aerial imaging solutions.

As **CASA-Accredited, Certified, and Licenced Remote Pilots and Operator**, our fleet of advanced commercial-grade drones, includes the DJI Mavic 3T Enterprise (Thermal), DJI Avata 2, and DJI Neo. This technology allows us to provide high-quality aerial thermal imaging, and data collection as well as providing real time live viewing services across various industries.

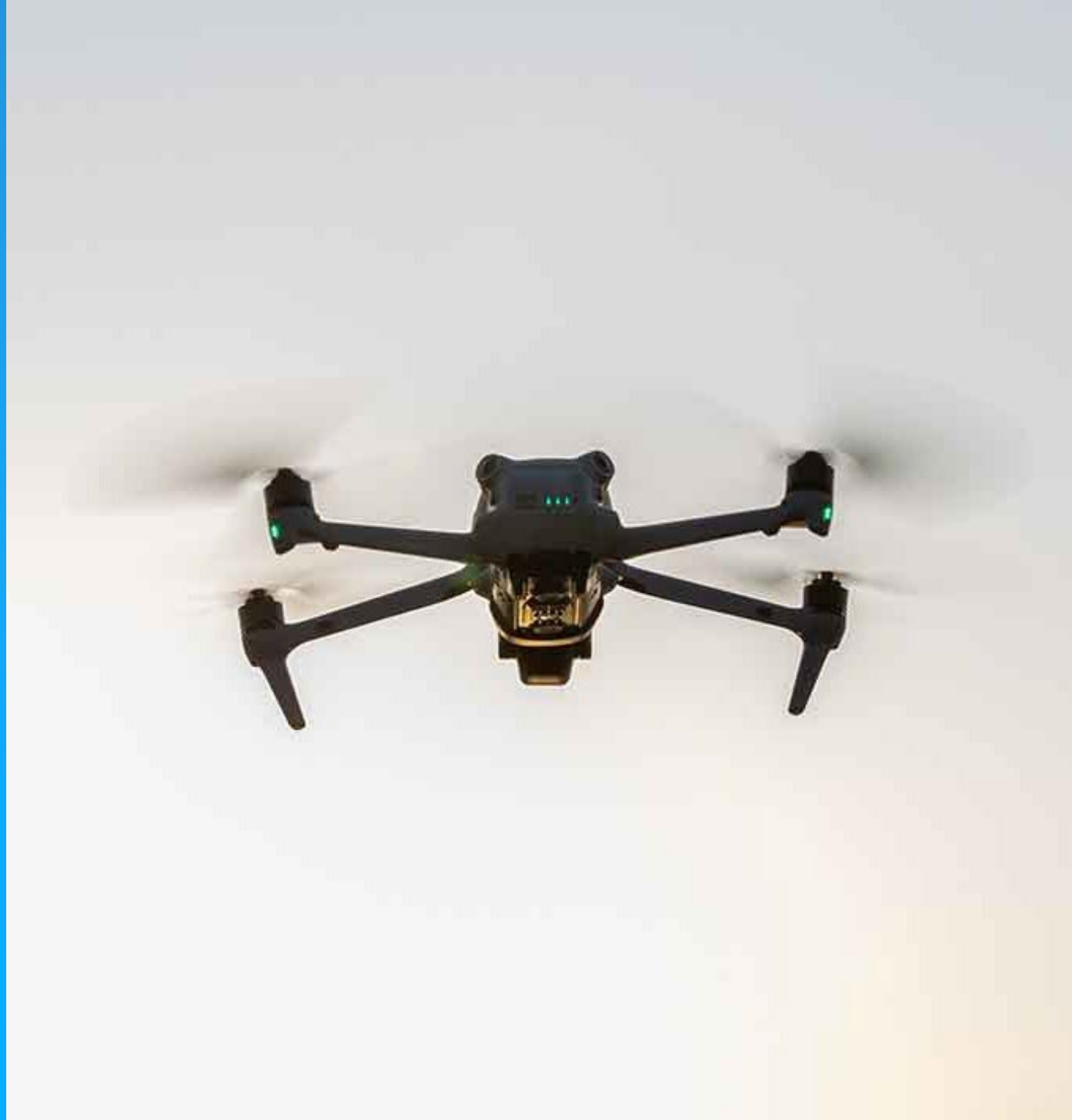
Our team specialises in delivering tailored drone solutions for construction monitoring, land surveying, thermal inspections, property and creative content creation for various online platforms. With a strong focus on safety, compliance, and innovation, we are committed to transforming how businesses visualise, analyse, and optimise our operations through aerial intelligence.



OUR VISION

We partner with businesses to harness the power of drone technology and AI, turning complex imaging challenges into smarter workflows.

By integrating specialised aerial insights, we help organisations work safer, and more cost effectively—ensuring they not only meet today’s demands but, stay ahead of tomorrows.





OUR MISSION

We aim to transform visual storytelling and data collection with advanced drone technology, focusing on outstanding service, safety, and quality.

Our goal is to exceed expectations by providing customised aerial imaging solutions that enhance, project assessments, marketing and business operations, fostering growth and efficiency across commercial, industrial and government sectors.

An aerial photograph of a large-scale construction or quarry site. The ground is a mix of light-colored soil and darker, rocky areas. Several pieces of heavy machinery, including trucks and excavators, are visible. There are large piles of material and a network of dirt roads. The overall scene is one of active industrial work.

Our ***COMPETENCIES***



Request a Call

NEW ERA OF DRONES

The Power of *DRONE* Thermal Imaging

Drones revolutionise industries by providing:

- Precision data collection for surveying, mapping, 2D/3D modelling
- Unparalleled visibility and comprehensive aerial insights
- Real-time monitoring for immediate decision-making
- Enhanced safety through access to hazardous areas

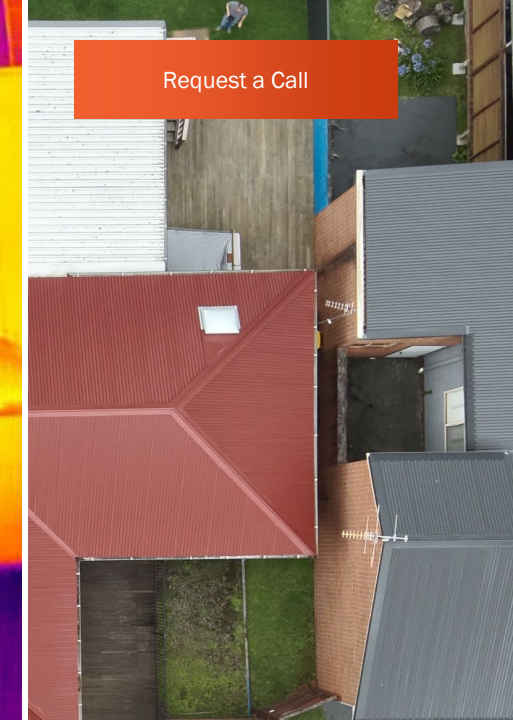
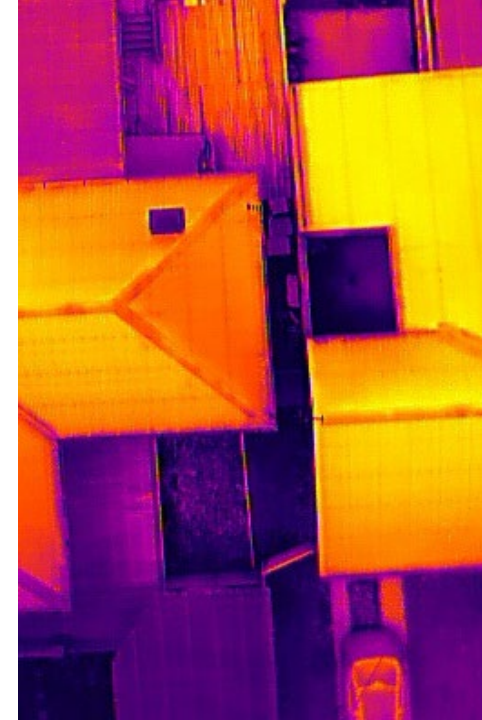


| NEW ERA OF DRONES

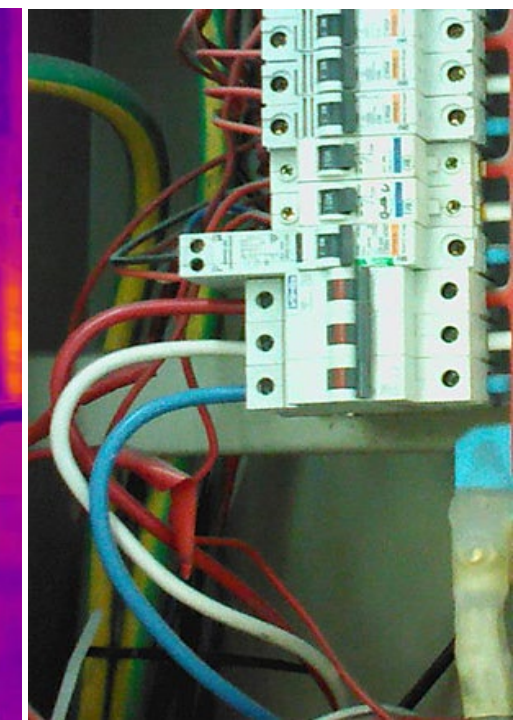
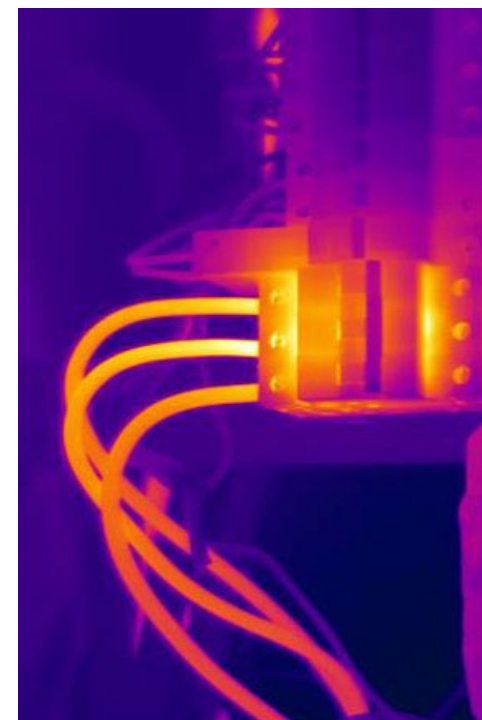
Our Commercial Grade Drone Fleet offers versatile solutions for:

- Thermal and Asset inspections
- Data collection and analysis
- Construction and infrastructure monitoring
- Real estate marketing and property management
- Environmental monitoring and resource management
- Immersive cinematography and event coverage
- Feral Animal Detection and Monitoring

By harnessing drone technology, we deliver innovative visual solutions that transform how businesses visualise, analyse, and optimise their operations across diverse sectors.



[Request a Call](#)



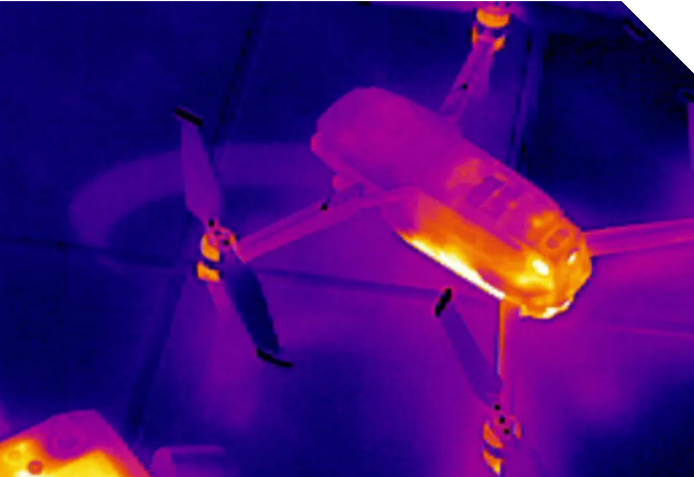


[Request a Call](#)

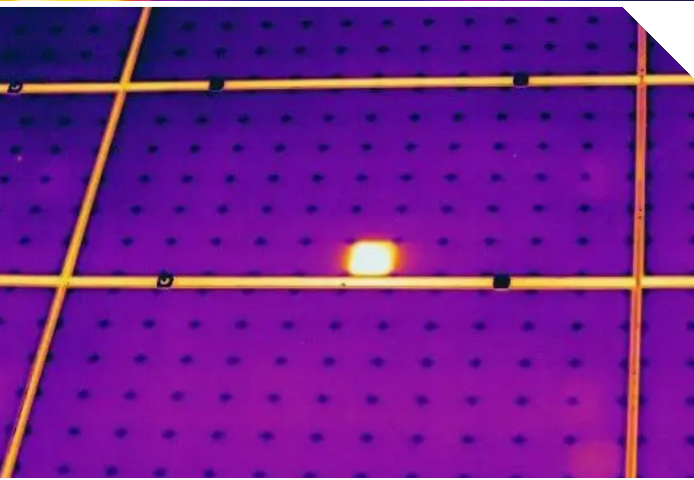
| THERMOLOGY TECHNOLOGY

Commercial Thermal Imaging Services:

Our thermal imaging services are part of Non-Destructive Testing (NDT), utilising thermography to measure temperature variations and identify potential problems. Thermography, a key component of NDT, measures temperature variations to identify issues such as heat leaks or corrosion. Leveraging the DJI Mavic 3T Enterprise Thermal drone, we provide high-resolution thermal inspections that help detect issues such as overheating connections or unbalanced loads in electrical components.



Thermal imaging drones are incredibly versatile, applicable across various industries including facade inspections, energy efficiency, leak detections, construction, mining, electrical work, surveillance, firefighting, and search and rescue operations. These cameras capture video, JPG, and radiometric data, which we process using third-party AI-driven software for enhanced post-production analysis.





Thermal Imaging Services

Non-Invasive Inspections:

Safely inspect electrical components *without disrupting* operations.

Aerial Capabilities:

Access *difficult-to-reach* areas using drone technology.

Predictive Maintenance:

Support *annual or bi-annual* monitoring for proactive maintenance strategies.



Efficiency Benefits of Thermal Imaging

Thermal imaging offers numerous efficiency benefits across energy, financial, and operational aspects. By identifying energy losses, detecting potential equipment failures, and optimising maintenance strategies, businesses can significantly enhance their operational efficiency.

Energy + Financial + Operational



Efficiency Benefits of Thermal Imaging

Energy Efficiency

- Identify heat leaks and energy losses in buildings and equipment.
- Optimise HVAC systems and insulation to reduce energy consumption.
- Enhance environmental sustainability by minimising energy waste.

Financial Benefits

- Reduce maintenance costs by detecting issues before they escalate into costly repairs.
- Minimise downtime and extend equipment lifespan through predictive maintenance.
- Potentially lower insurance premiums by demonstrating proactive risk management.

Operational Benefits

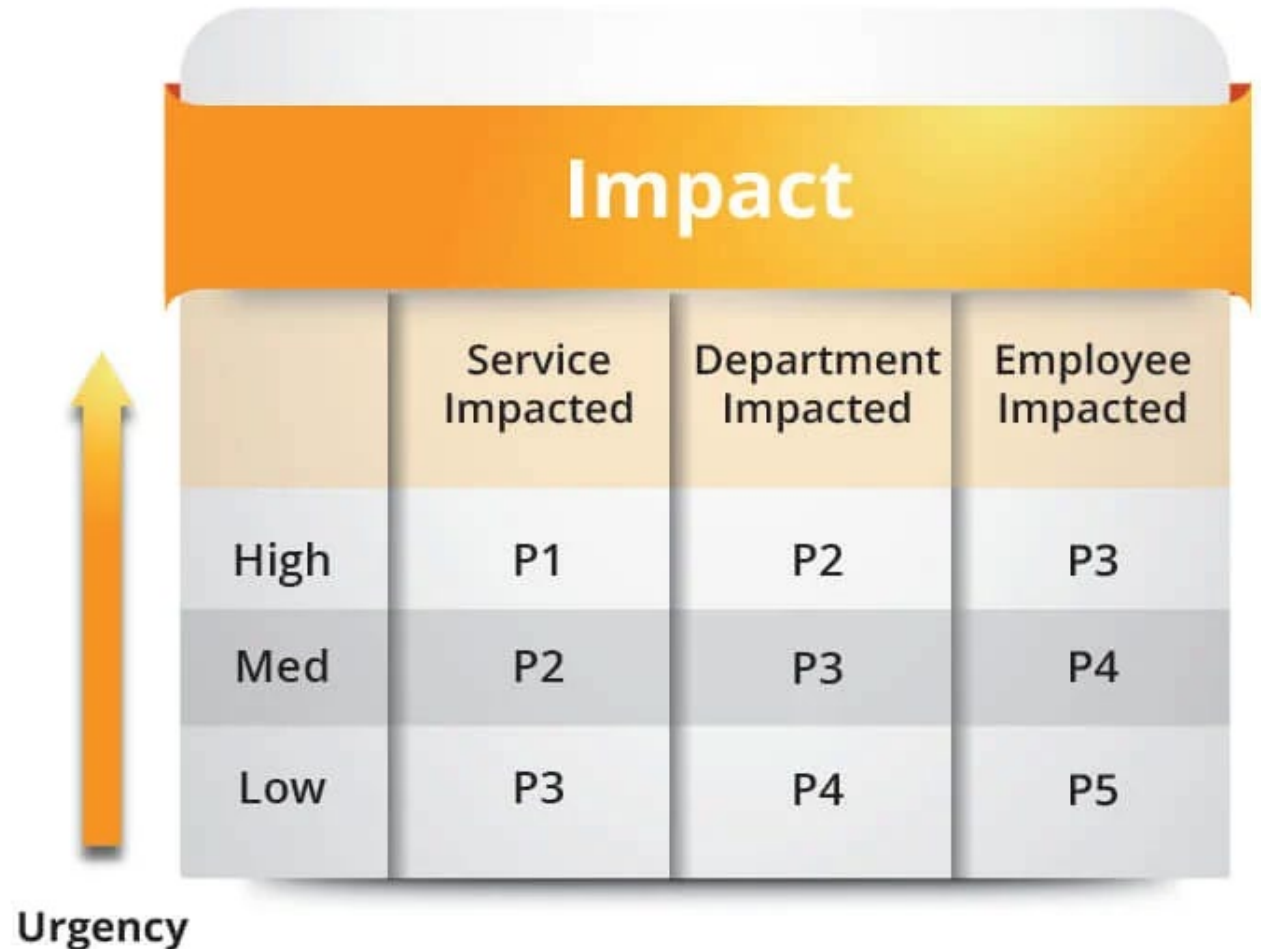
- Improve safety by detecting overheating equipment and potential fire hazards.
- Enhance operational reliability by scheduling maintenance during planned downtimes.
- Increase productivity by reducing unexpected equipment failures and associated repair times.

Thermal Reporting - Prioritisation

Optional Prioritisation Layer (P1-P5)

Clients may request a bespoke prioritisation framework for maintenance planning:

- P1: Critical - Immediate action required
- P2: High - Urgent attention needed
- P3: Medium - Scheduled maintenance
- P4: Low - Planned maintenance cycles
- P5: Minimal - Future evaluation





WHAT WE DO

DRONE **Services**

Significantly enhance and support project outcomes, development insights, energy efficiency, quality control and safety on site. Drones can access hazardous and inaccessible areas, see what is not visible to the naked eye, operate autonomously, collect invaluable data, while also producing high-resolution content in varied formats.

[Request a Call](#)



Thermal & Data Collection

Energy efficiency analysis and structural integrity assessments.



Progress Monitoring

Regular site updates video, photography and 2D/3D Model and imaging for quality control.



Aerial Land Surveying

Precise topographic surveys and volumetric calculations.



Advertising & Marketing

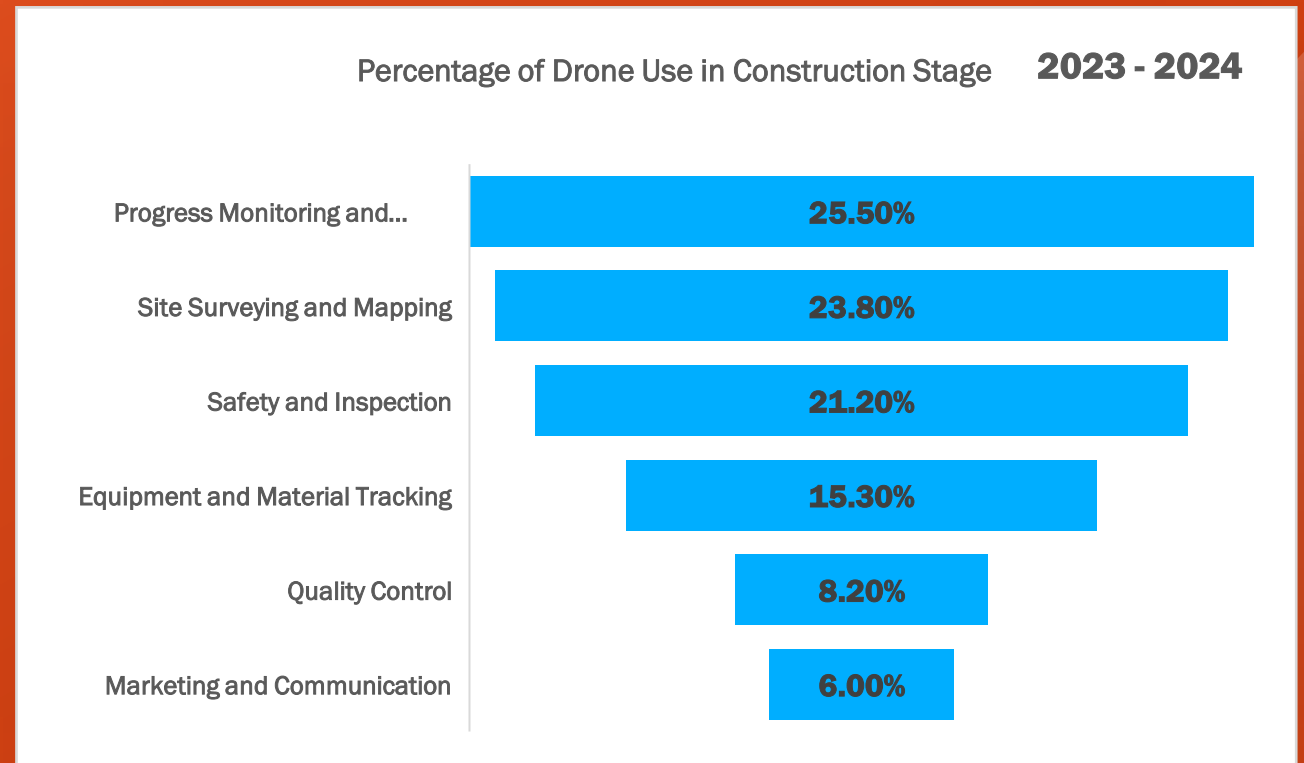
High-resolution aerial footage for project showcases, websites, TV, socials, tenders and stakeholder presentations.



DRONE Use In Construction

The construction industry has seen a **239% increase** in drone adoption over a single year, demonstrating the growing importance of these applications

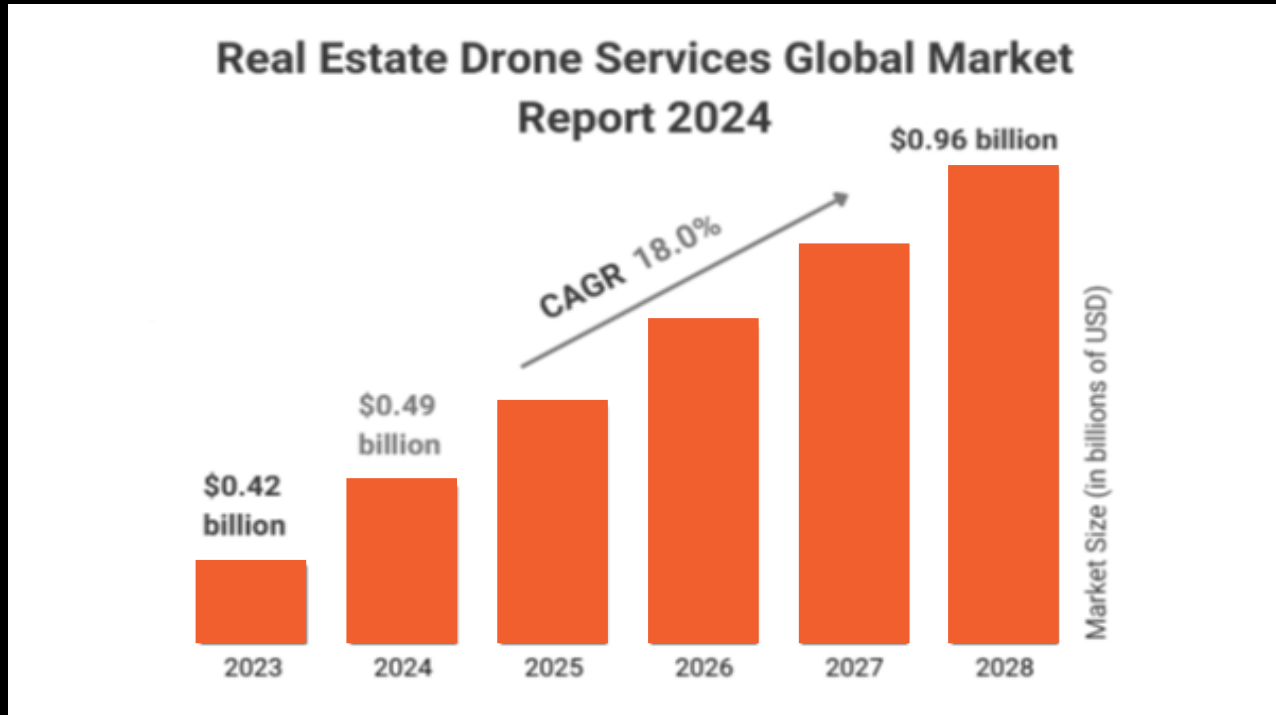
- Progress monitoring and documentation is the primary use case, allowing real-time tracking of construction activities.
- Site surveying and mapping is the second most common application, providing accurate topographical data and measurements.
- Safety and inspection represents a significant portion of drone usage, helping identify potential hazards and conduct structural assessments.
- Equipment and material tracking helps prevent theft and manage resources effectively.
- Quality control ensures construction meets specifications.
- Marketing and communication helps showcase projects and maintain stakeholder engagement.





DRONE Use In Real Estate

Real Estate Drone Services Market Set to Soar: Expected to Reach **\$0.96 Billion (USD)** by 2028

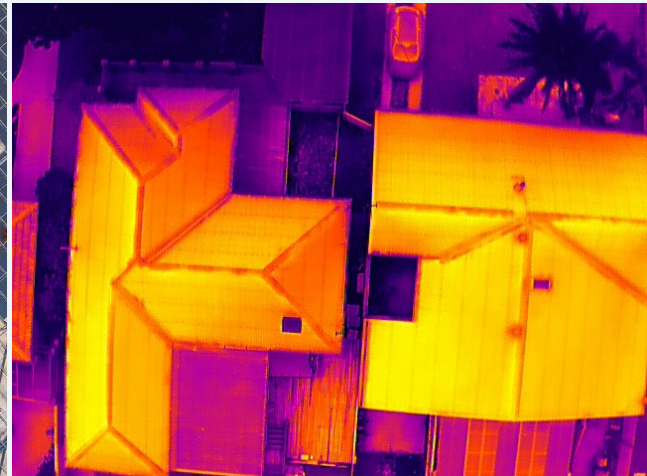
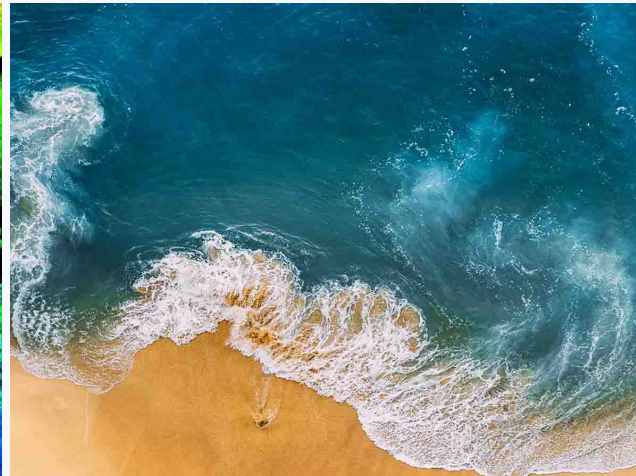
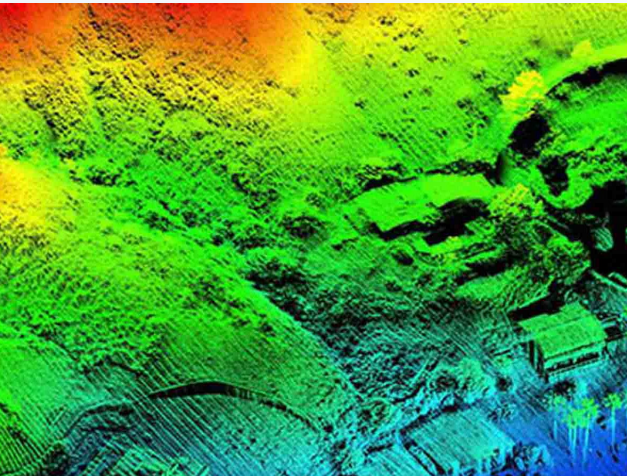
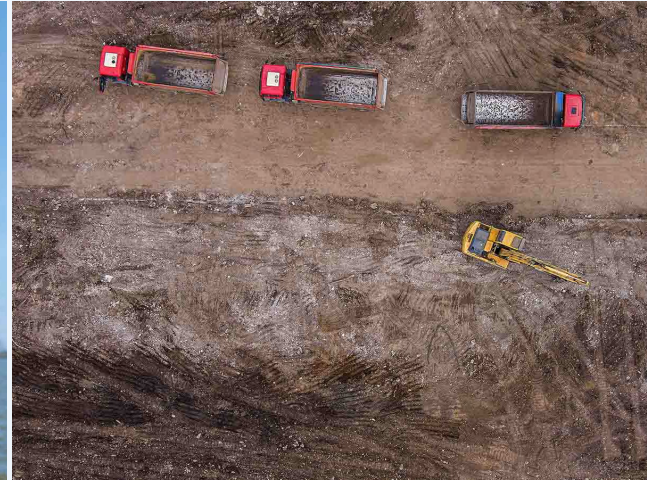
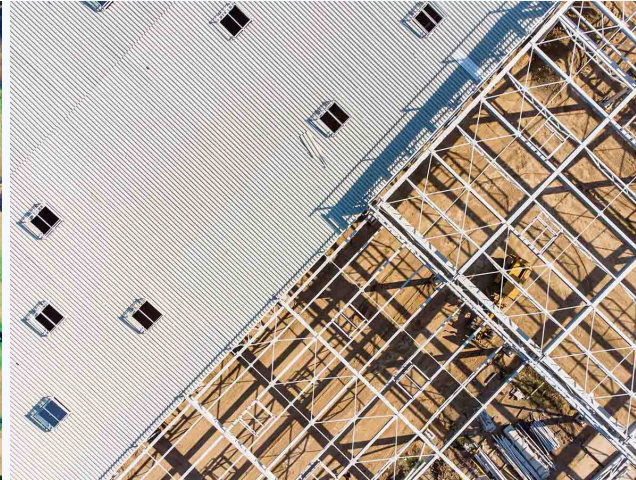
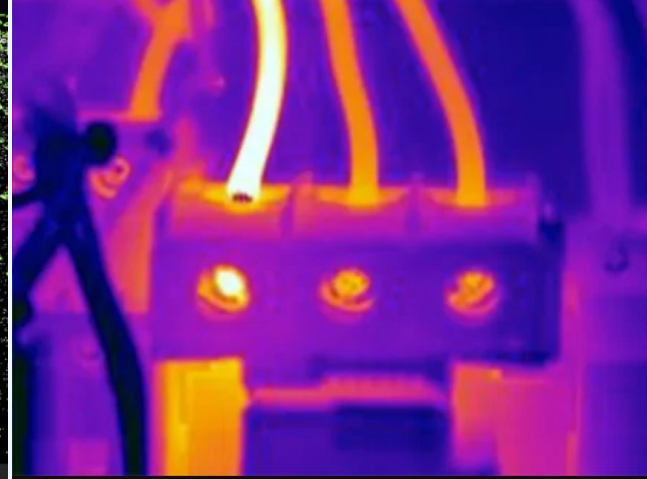
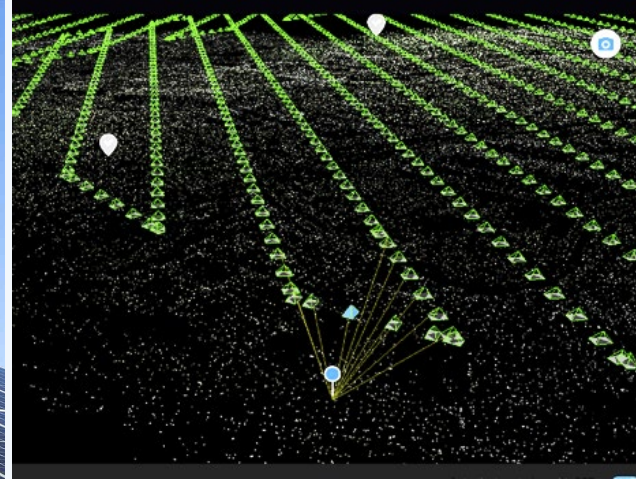


Source: [The Business Research Company](#)

- The global real estate drone services market is experiencing rapid growth, with projections indicating **an increase from \$0.49 billion in 2024 to \$0.96 billion in 2028**, at a compound annual growth rate (CAGR) of 18.0%.
- Key drivers of this growth include increased demand for aerial imagery and mapping services, cost efficiency, enhanced property marketing, and improved safety in property inspections.
- The market is segmented into various services, including **mapping and surveying, inspection, and photography and filming**, catering to both commercial and residential customers.
- Technological advancements, such as the integration of 3D mapping capabilities and the adoption of **thermal imaging**, are shaping the future of real estate drone services.
- North America currently leads the market, but the **Asia-Pacific region is expected to show the fastest growth in the coming years**.
- Major companies in the sector are focusing on developing innovative solutions like 3D virtual tours to enhance data collection capabilities and provide more comprehensive property insights.



Our
EXPERIENCE





Our
ADVANTAGES



Request a Call

ABOUT US

We Lead with **DRONE** Innovation

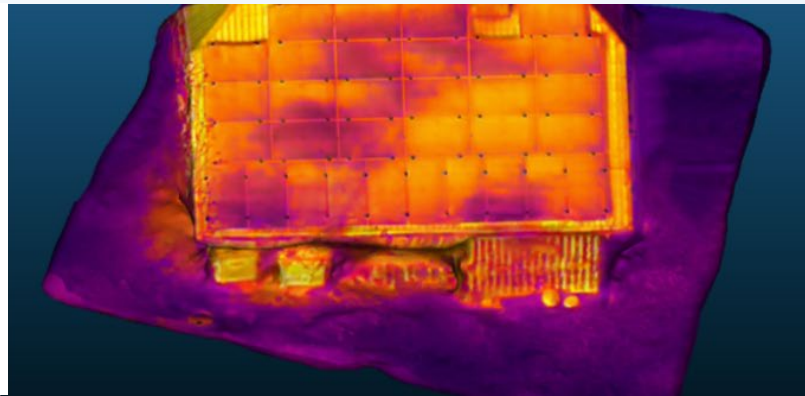
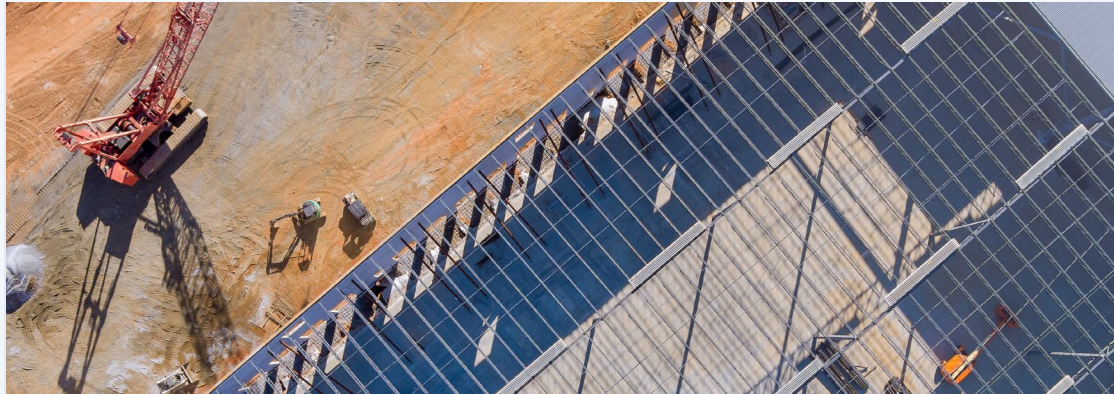
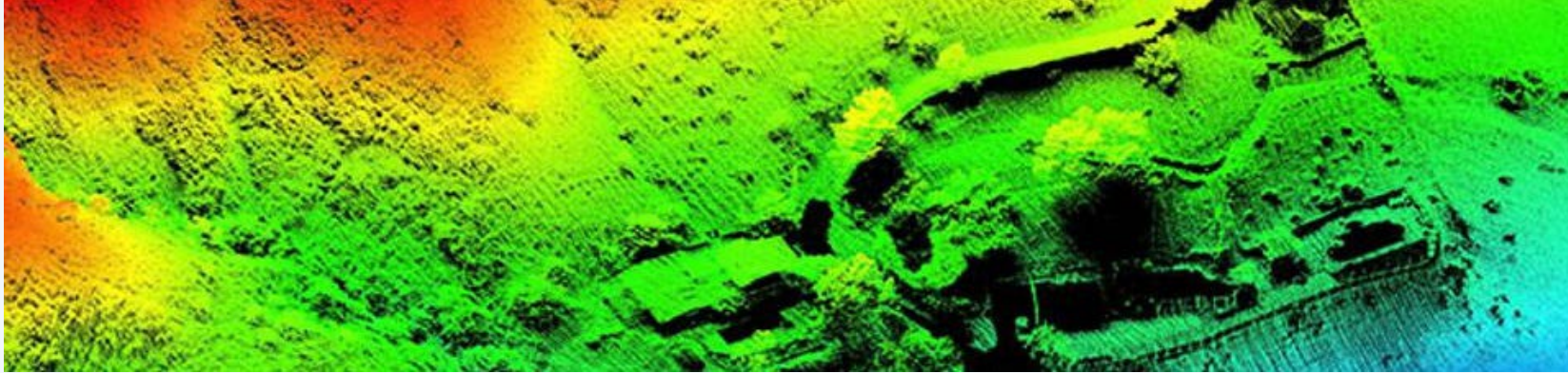
Our Advanced Commercial-Grade Drone Fleet includes the DJI Mavic 3T (Thermal) Enterprise, DJI Avata 2, and DJI Neo, offers and commercial grade aerial solutions:

- 4K High-resolution and thermal imaging for detailed outdoor and indoor inspections.
- Extended operational capacity with multiple batteries ready for longer missions up to approximately 3 hours.
- Specialised imagery for real estate, construction, and social media content both indoor and outdoor photography and videography.
- Versatile applications across various industries.





Request a Call



Delivering Versatility, Flexibility & Efficiency

We deliver tailored solutions across sectors, adapting swiftly to changes while optimising resources. Our approach ensures successful, timely project completion.



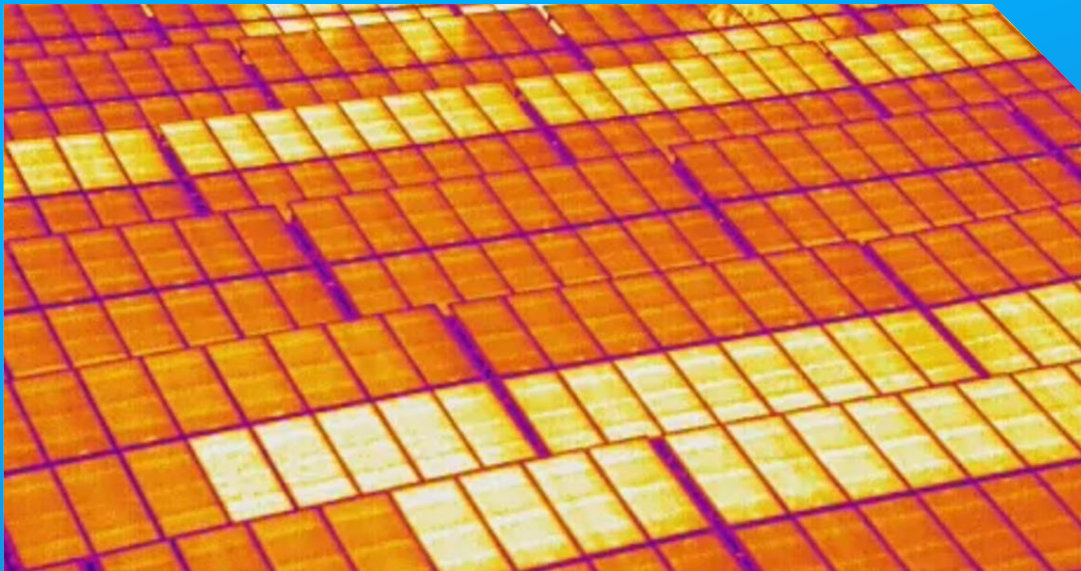
[Request a Call](#)

ABOUT US

Specialised Imaging by Licenced Remote Pilots

Our expert team of **CASA-Accredited, Certified, and Licenced Remote Pilots** harness commercial grade drone technology to deliver exceptional aerial imagery and data collection.

Transform your project insights with our professional aerial imaging services, providing a unique perspective for informed decision-making.



Thermal Inspections

Detect heat signatures for energy audits and structural assessments. Enhance safety inspections and identify hidden issues efficiently.

Area Surveying

Aerial measurements for land mapping. Save time and resources while improving data quality for various projects.

2D/3D Mapping

Create detailed topographical models and orthomosaic maps. Visualize landscapes and structures with high-resolution accuracy for better planning.

Data Collection

Gather comprehensive aerial data for analysis and decision-making. Streamline project management with real-time insights and actionable information.



**OUR
CREW**





Request a Call



OUR CREW

Heather James

Licensed & Certified CEO/Chief Remote Pilot

Heather's qualifications and expertise:

- CASA Accredited Remote Operator ReOC: 8871
- CASA Remote Pilot Licence (RePL)
- CASA Certified Aeronautical Radio Operator (AROC)
- Thermal imaging and mapping
- Photography and Videography
- Social Media, Marketing and Advertising
- Graphic Design and 2D/3D Imaging



CASA: ReOC: 8871 | ARN: 1254741
Mobile: 0416 298 942
Email: heather@prodrone.com.au

Heather brings over 20 years of corporate expertise in social media content creation, marketing, advertising, photography, videography, and graphic design to the PDI Team.

 0416 298 942

 heather@prodrone.com.au



Request a Call



OUR CREW

Daniel James

Licensed & Certified Director/Remote Pilot

Daniel's qualifications and expertise:


- CASA Accredited Remote Operator ReOC: 8871
- CASA Licensed Remote Pilot
- CASA Certified Aeronautical Radio Operator
- Thermal imaging and mapping
- Construction site and Surveying knowledge
- Workplace OH&S and Safety experience
- Photography and Videography



CASA: ReOC: 8871 | ARN: 1290096
Mobile: 0439 629 247
Email: daniel@prodrone.com.au

Daniel brings over 15 years of operations management, OH&S workplace safety, construction, mapping and surveying expertise to the PDI Team.

 0439 629 247

 daniel@prodrone.com.au



Our
CREDENTIALS



Our Credentials

- **Enhanced Safety Compliance:** As **CASA-Accredited Remote Operators**, we must adhere to stringent ground and airspace safety regulations, minimising and mitigating risks and ensuring legal compliance, supported by thorough flight plans, documentation and safety reporting operational procedures.
- **Expanded Operational Capabilities:** As Certified operators can apply for special approvals from CASA for complex tasks such as night operations, flights in controlled airspace, enhancing potential project scope.
- **Professional Expertise:** Licenced remote pilots undergo rigorous theoretical and practical training, equipping us with skills to handle various flight scenarios, technical and safety issues.
- **Comprehensive Insurance Coverage:** As CASA-certified operators we carry **\$20 Million Public Liability insurance** with QBE Insurance, protecting our clients from potential liabilities.
- **Redundancy and Flexibility:** We have two Licenced Remote Pilots, headed and managed by our Chief Remote Pilot. This conveniently provides backup pilots and allows for more complex operations, enhancing project efficiency and reliability.



CASA ReOC Remotely Piloted Aircraft Operators Certificate (Accreditation)



RPA OPERATOR'S CERTIFICATE (ReOC)

Number CASA.ReOC.8871 Revision No: Initial

This certificate is granted pursuant to regulation 101.335 of the
Civil Aviation Safety Regulations 1998 (CASR) to:

PROFESSIONAL DRONE IMAGERY PTY LTD

ARN: 1260352 ACN: 679 603 582

The holder of this certificate is certified as a Remotely Piloted Aircraft (RPA) operator and is authorised to operate the RPA described in the attached schedules subject to any limitations and conditions in those schedules.

This certificate is effective from 08 November 2024 and will expire on 30 November 2025.

Steven Wayne Griffin
CASA.IOD.RPA.0004
Uncrewed Approvals

Delegate of the Civil Aviation Safety Authority

08 November 2024

CASA RePL & AROC Remote Pilots Licence < 25kgs Aeronautical Radio Operators Certificate



Remote Pilot Licence

Heather June JAMES



ARN 1254741



Remote Pilot Licence

Daniel JAMES



ARN 1260096



Aeronautical Radio Operator Certificate

Heather June JAMES



ARN 1254741



Aeronautical Radio Operator Certificate

Daniel JAMES



ARN 1260096



NSW Government White Card National WHS General Construction Induction Training



Statement of National WHS General Construction Induction Training SOT 3421771

SafeWork NSW Statement of National WHS General Construction Induction Training

This is to certify that

Heather James
(name of participant)

has completed

National WHS General Construction Induction Training

On 4/13/2025
(date of training)

This certificate is valid for 60 days from the course date.

Registered training organisation name Allens

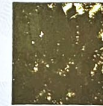
SafeWork NSW approval number RTO 80027

Trainer name Jayne Smith

Trainer identification number TR 20795

Trainer signature Jayne Smith

Note: Please ensure you present this certificate to your employer as proof of completion of training.



LET'S TALK SAFETY



[Request a Call](#)

We can help on your next project

By investing in the latest technology, we are equipped to handle aerial imaging solutions that can take your project to the next level.

Drones have transformed industries with efficient, cost-effective solutions for diverse projects. They provide unique perspectives and valuable data through high-resolution imagery, 3D modeling, thermal inspections, and volumetric calculations. Our specialised drone services can enhance project outcomes and decision-making for tasks ranging from aerial surveying to construction monitoring and marketing content creation.



Aerial Surveying

Utilising AI precision surveying for accurate topographical maps and CAD-compatible 2D/3D model outputs.



Site Progress

Fortnightly aerial documentation with high-resolution imagery, video capture, and orthomosaic mapping for comprehensive site planning and progress tracking.



[Request a Call](#)

***DRONE* One Touch Aerial Mapping**

The DJI Mavic 3T Enterprise drone offers efficient mapping capabilities with just one touch:

- Automated area scanning with pre-programmed flight paths
- Simultaneous capture of visual and thermal imagery
- Seamless orthomosaic creation
- Precise data collection for 3D modeling

This streamlined approach enables rapid deployment for construction monitoring, environmental assessments, and infrastructure inspections.





Contact Us

🏠 Wollongong NSW 2500

✉️ subcontracts@prodrone.com.au

☎️ 0416 298 942

🌐 prodrone.com.au





PROFESSIONAL

DRONE

IMAGERY PTY LTD